



Nutrient Banking in Virginia: Updates and Trends



TJ Mascia

April 14, 2021

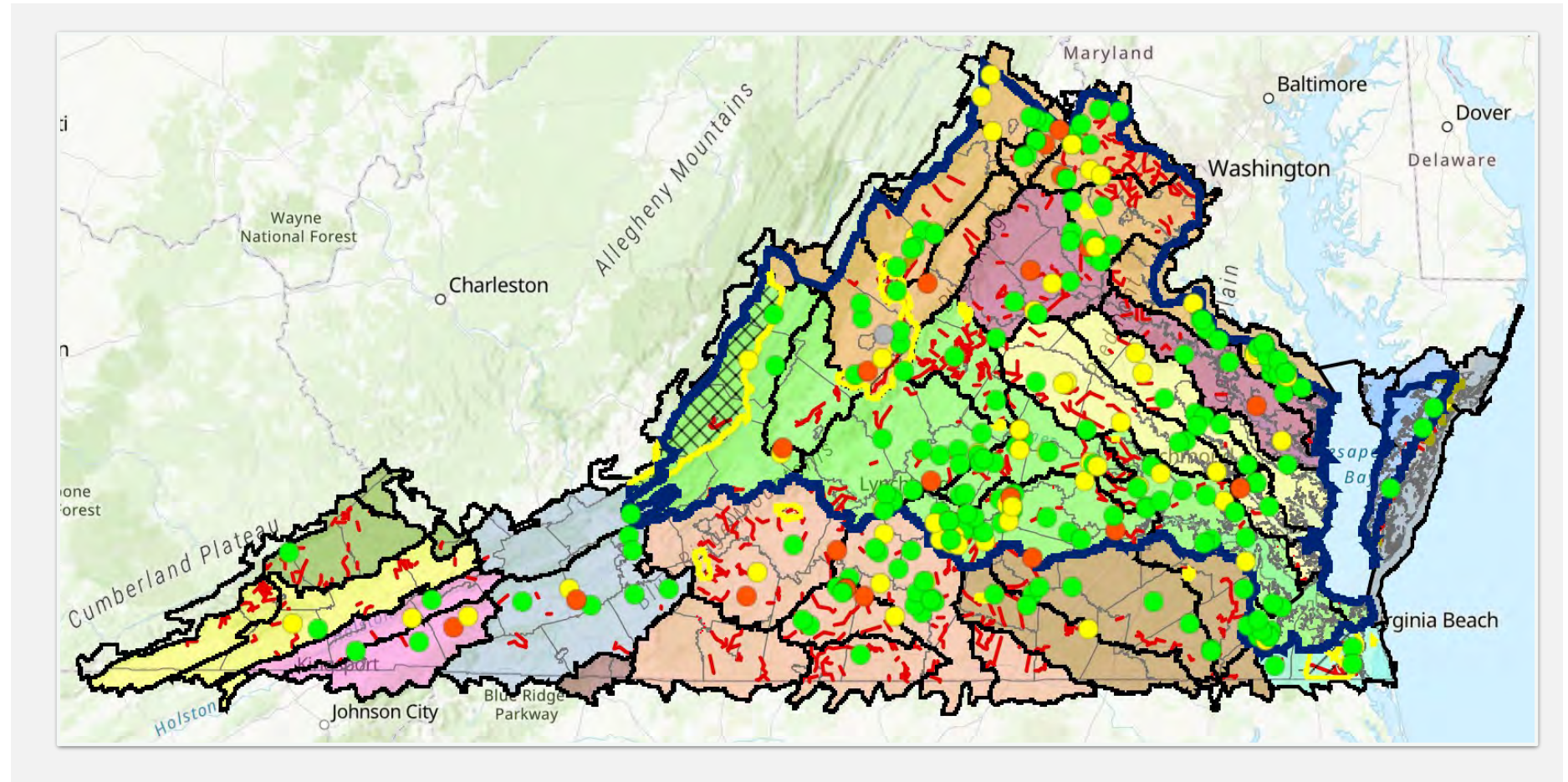
CHANGES AFFECTING THE GENERATION AND USE OF NUTRIENT CREDITS

► Generation

- Crediting
- Credit Release

► Use

- Service Area



CREDIT GENERATION

► Land Conversion Rates (*GM20-2001, effective March 2020*)

Watershed	Old Rate (lbs TP/Ac)	New Rate (lbs TP/Ac)	Change
Potomac 02070011	0.74	0.11	-0.63
James 02080208	0.93	0.14	-0.79
Potomac 02070005	0.81	1.59	+0.78

► 5% Credit Retirement (*9VAC25-900-90.A.*)

► Credit Release (*9VAC25-900-90.B.*)

- Land Conversion: 1-3 years
- Stream Restoration: 4+ years

► Stream Restoration

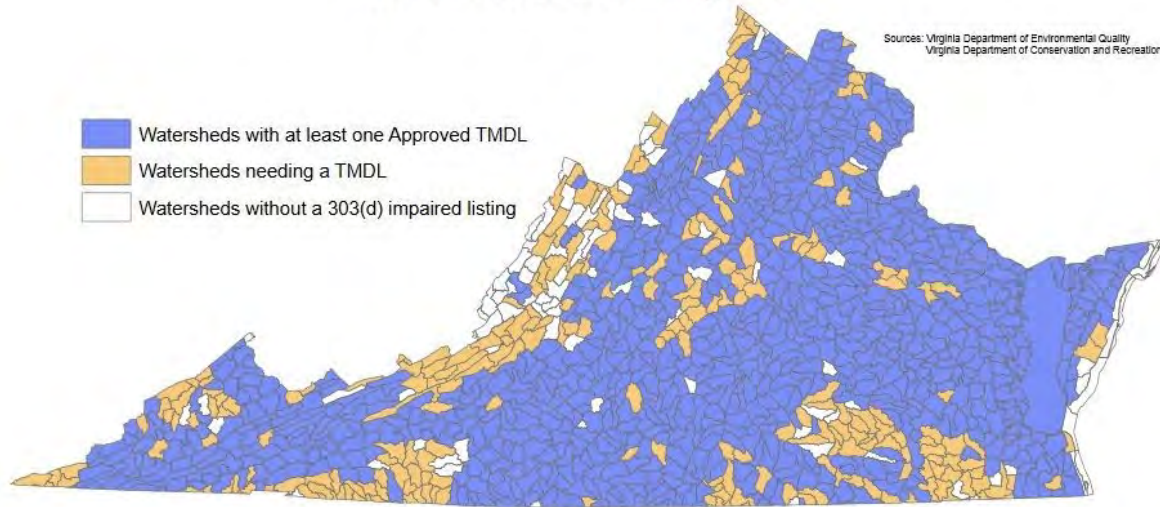
- Site Specific Bulk Density and Soil TP/TN
- Delivery Factors

CREDIT USE

► Service Area Restrictions

- Standard Credit Usage
- Impaired Waters
- Local TMDL

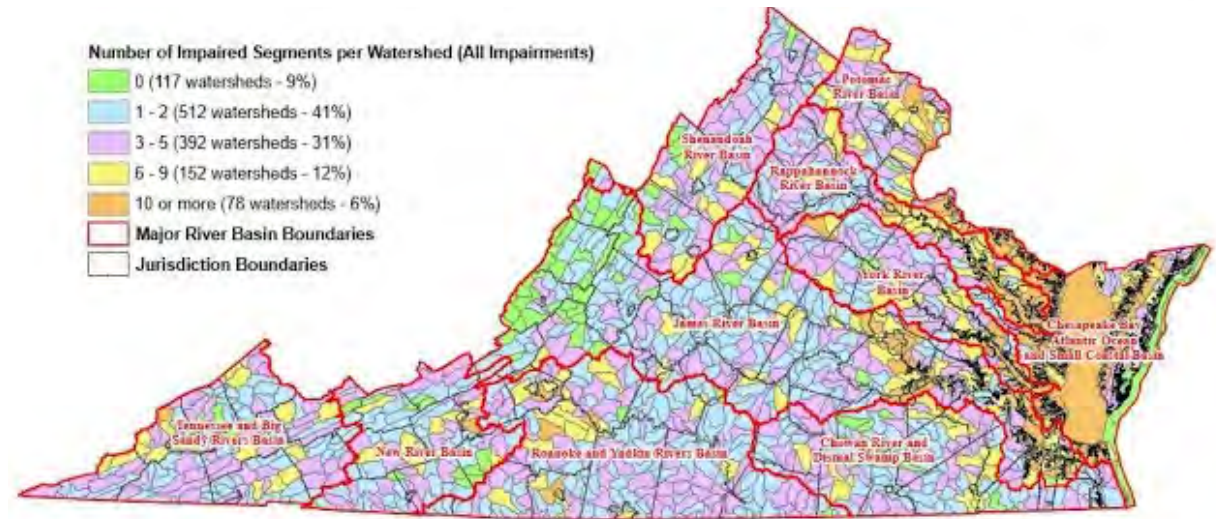
TMDL Status in Virginia



Note: Some watersheds have multiple impairments and may have an approved TMDL as well as impairment(s) needing a TMDL study. Natural impairments (Category 4C) and Alternative Restoration impairments (Category 4B) do not require a TMDL and are excluded from this tally.

draft: cb 060220

Distribution of Impaired* Waters In Virginia's Watersheds

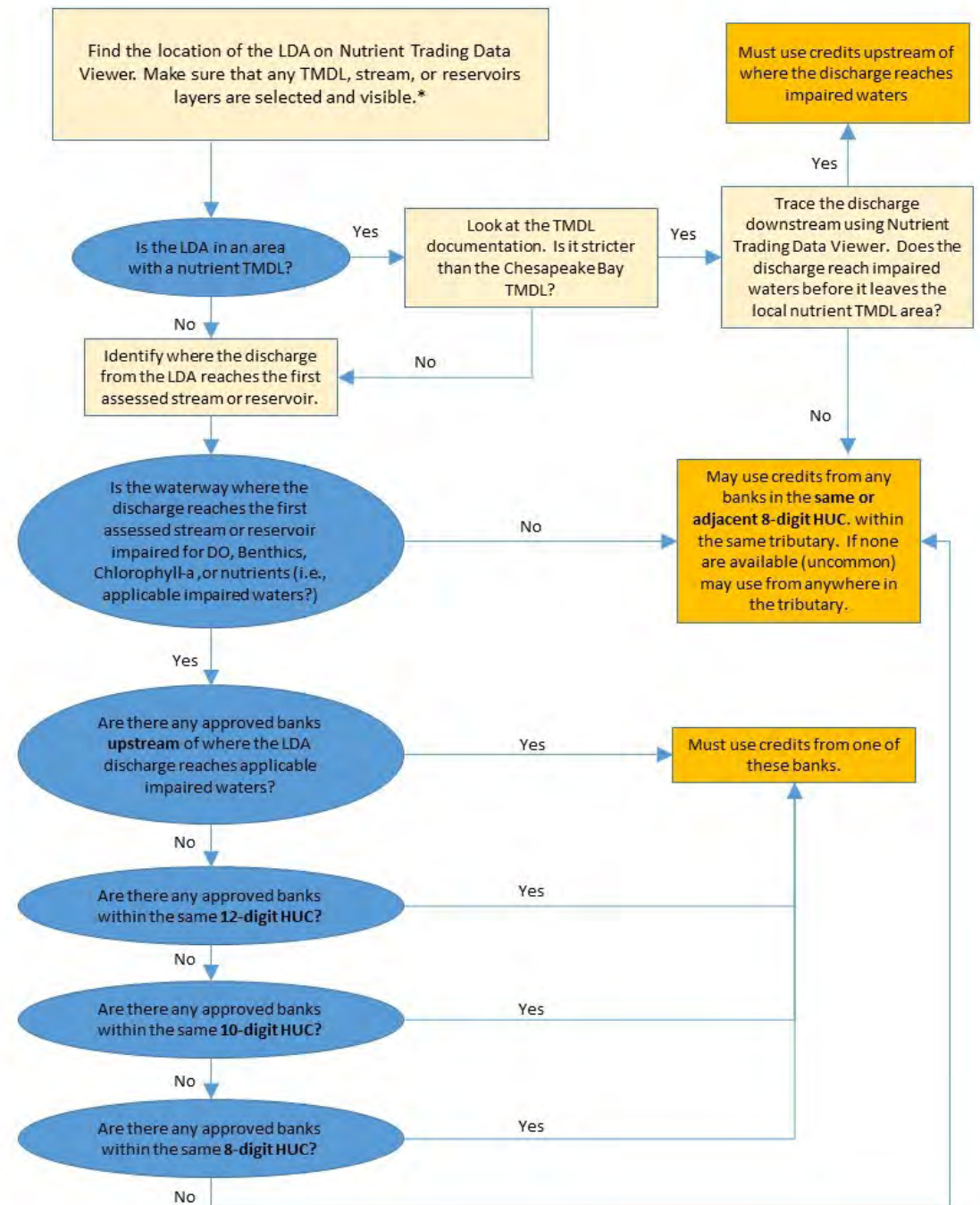


* Excludes Category 4B (Effluent Limited) Waters
Sources: Virginia Department of Environmental Quality
Virginia Department of Conservation and Recreation
Virginia Geographic Information Network

draft: cb 060220

CREDIT USE

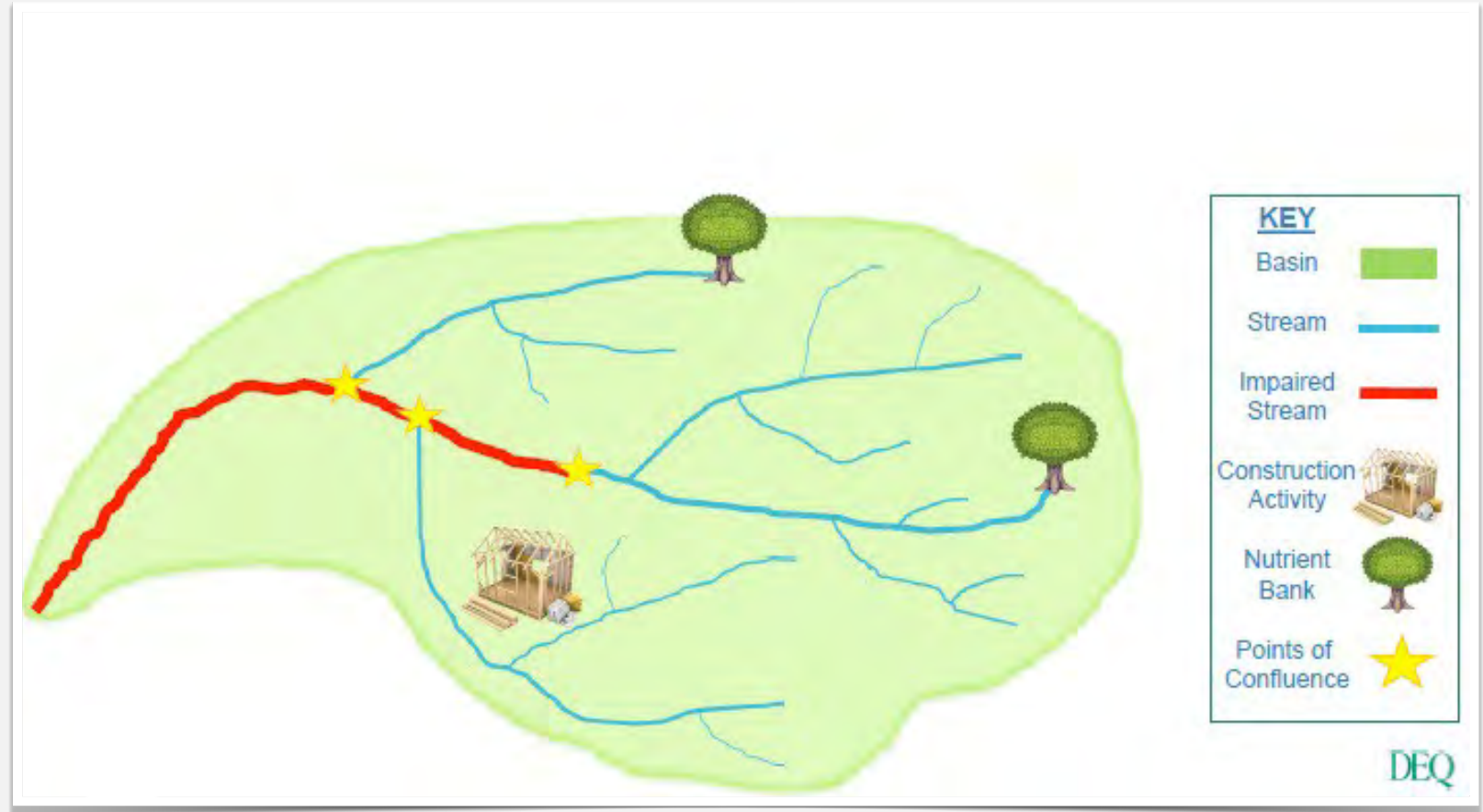
► New Service Area Hierarchy



*Confirm with the regulatory authority that credits may be used and that there are no additional restrictions on their use.

CREDIT USE

► Impaired Waters Example



IMPAIRMENT APPLICABILITY DETERMINATION

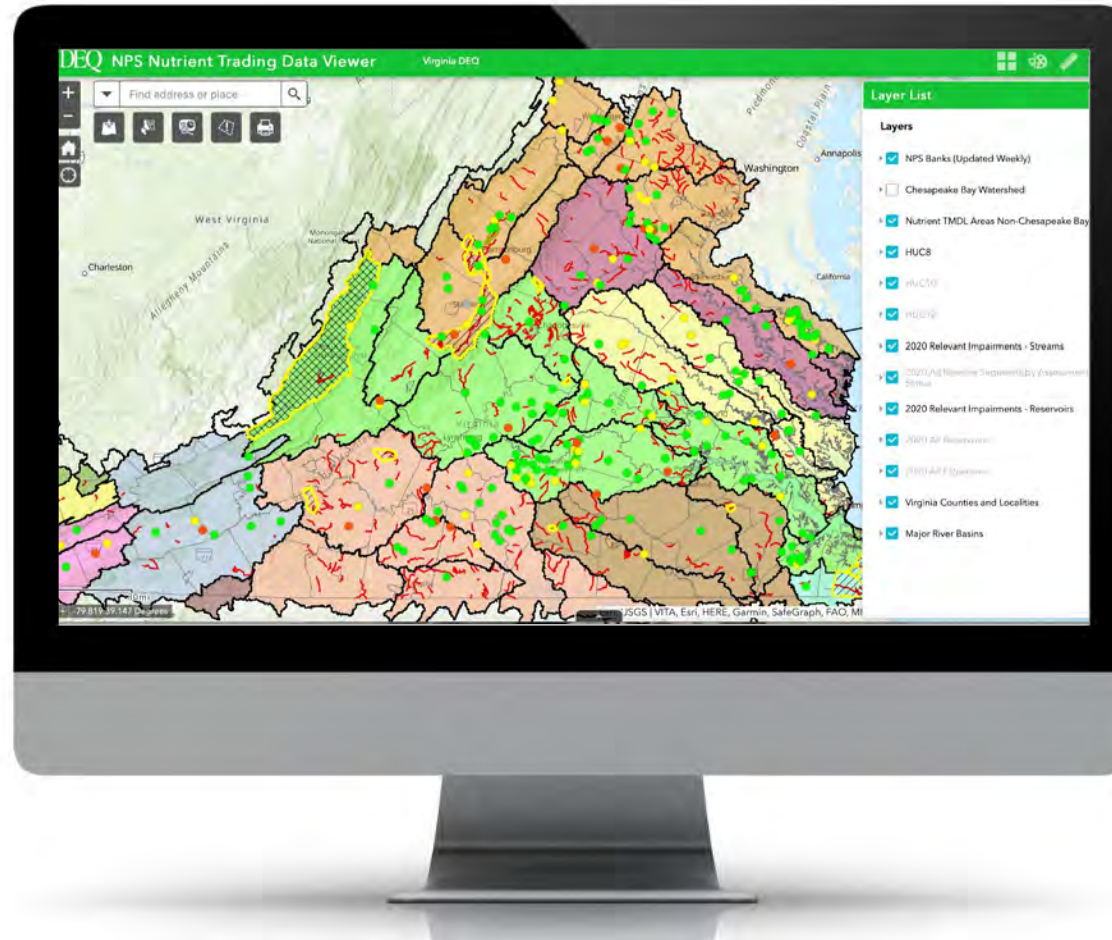
Per 9VAC25-900-91.C.2, the impaired waters hierarchy does not apply when it has been demonstrated to DEQ's satisfaction that the applicable impairment is not likely caused by nutrients.

- ▶ Case-specific determination
- ▶ Nutrient concentrations below those considered to have a low probability of causing stress to the benthic assemblage (DEQ Technical Bulletin WQA/2017-001)
- ▶ All TN concentrations < 1.0 mg/L, TP concentrations < 0.05 mg/L
- ▶ Median values for all recorded measurements below 0.5 mg/L (TN) and 0.02 mg/L (TP)

DEQ NUTRIENT DATA TRADING VIEWER

► [Click here to explore](#)

links to <https://vadeq.maps.arcgis.com/apps/webappviewer/index.html?id=227927eefaf64c47853c081760077216>





Thank You



TJ MASCIA | DIRECTOR OF MITIGATION

TJ.Mascia@davey.com | (252) 723-0815